

MYANMAR
Cyclone NARGIS
WHO/WHAT/WHERE
EDUCATION
MOST AFFECTED
TOWNSHIPS

23 MAY 2008

SCALE: 1:1,500,000



Map ID: MIMU010-26MAY2008
Projection/Datum: Geographic / WGS84
GLIDE Num: TR-2008-000057-MMR

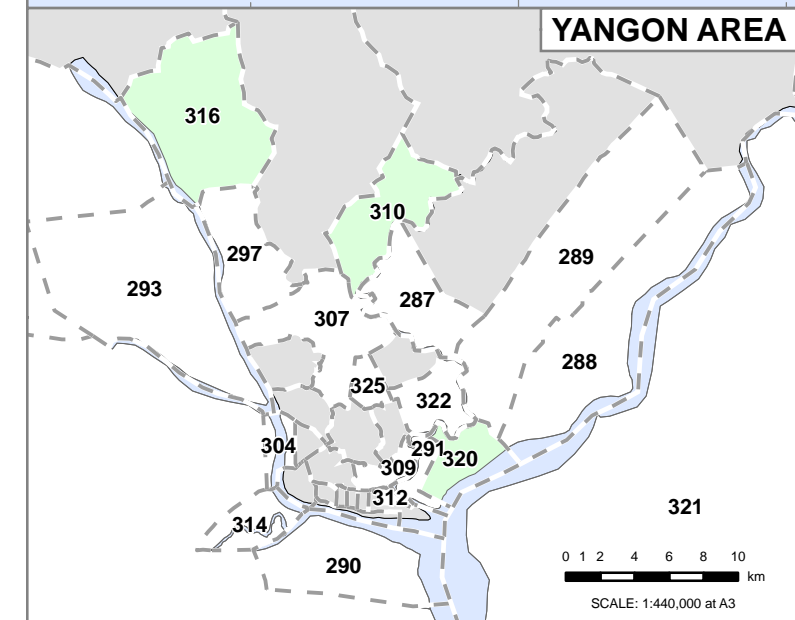
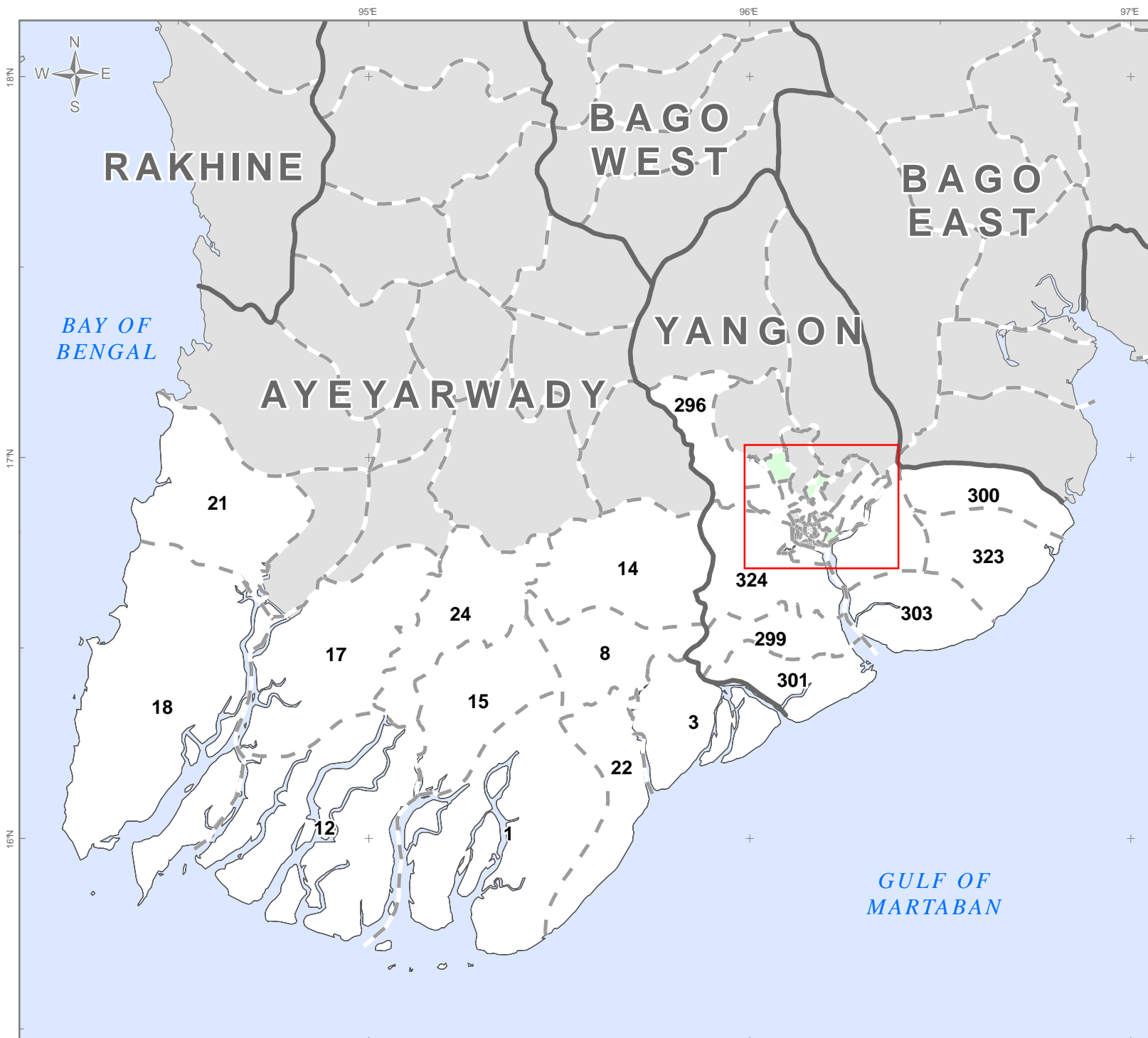
Data sources: Boundaries - Ministry of Health 2001, modified by UN RC's Office 2004; Place names - Ministry of Home Affairs (GAD) and Ministry of Agriculture & Irrigation (SLRD) translated by MIMU. Who/What/Where data collated by the MIMU.

Disclaimer: The names shown and the boundaries used on this map do not imply official endorsement or acceptance by the IASC membership.




Note: This map represents information as it has been reported to MIMU by the organisations concerned. Inclusion of an organisation on this map does not imply endorsement by the IASC Country Team or its projects. Note that this map only shows presence of organisations in a broad sector; it does not portray detailed information such as the volume of assistance, the number of beneficiaries, or the extent to which needs are met or unmet.

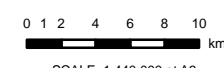
MIMU is grateful for the support of DFID.
<http://myanmar.humanitarianinfo.org>

MapAction is grateful for the support of the Vodafone Group Foundation and DFID.
myanmar@mapaction.org <http://www.mapaction.org>



EDUCATION
Number of Organisations

-  0
-  1 - 3
-  Outside area of interest



SCALE: 1:440,000 at A3

Data in table format by State / Division ordered by MapIndex

MapIndex	Township	P-Code	Organisations	Count
1	Bogale	MMR017024	None	0
3	Dedaye	MMR017026	None	0
8	Kyaikat	MMR017025	None	0
12	Labutta	MMR017016	None	0
14	Maubin	MMR017019	None	0
15	Mawlamyinegyun	MMR017018	None	0
17	Myaungmya	MMR017014	None	0
18	Ngapudaw	MMR017004	None	0
21	Patheingyi	MMR017001	None	0
22	Pyapon	MMR017023	None	0
24	Wakema	MMR017017	None	0

MapIndex	Township	P-Code	Organisations	Count
287	Dagon Myothit(North)	MMR013019	None	0
288	Dagon Myothit(Seikkan)	MMR013021	None	0
289	Dagon Myothit(South)	MMR013018	None	0
290	Dala	MMR013030	None	0
291	Dawbon	MMR013014	None	0
293	Hlaingtharya	MMR013008	None	0
296	Htantabin	MMR013006	None	0
297	Insein	MMR013001	None	0
299	Kawhmu	MMR013028	None	0
300	Kayan	MMR013026	None	0
301	Kungyangon	MMR013029	None	0
303	Kyauktan	MMR013024	None	0
304	Kyeemyindaing	MMR013038	None	0
307	Mayangone	MMR013042	None	0
309	Mingalartaungnyunt	MMR013022	None	0
310	North Okkalapa	MMR013012	SCF	1
312	Pazundaung	MMR013016	None	0
314	Seikgyikanaungto	MMR013031	None	0
316	Shwepyithar	MMR013007	SCF	1
320	Thaketa	MMR013013	SCF	1
321	Thanlyin	MMR013023	None	0
322	Thingangkuun	MMR013009	None	0
323	Thongwa	MMR013025	None	0
324	Twantay	MMR013027	None	0
325	Yankin	MMR013010	None	0