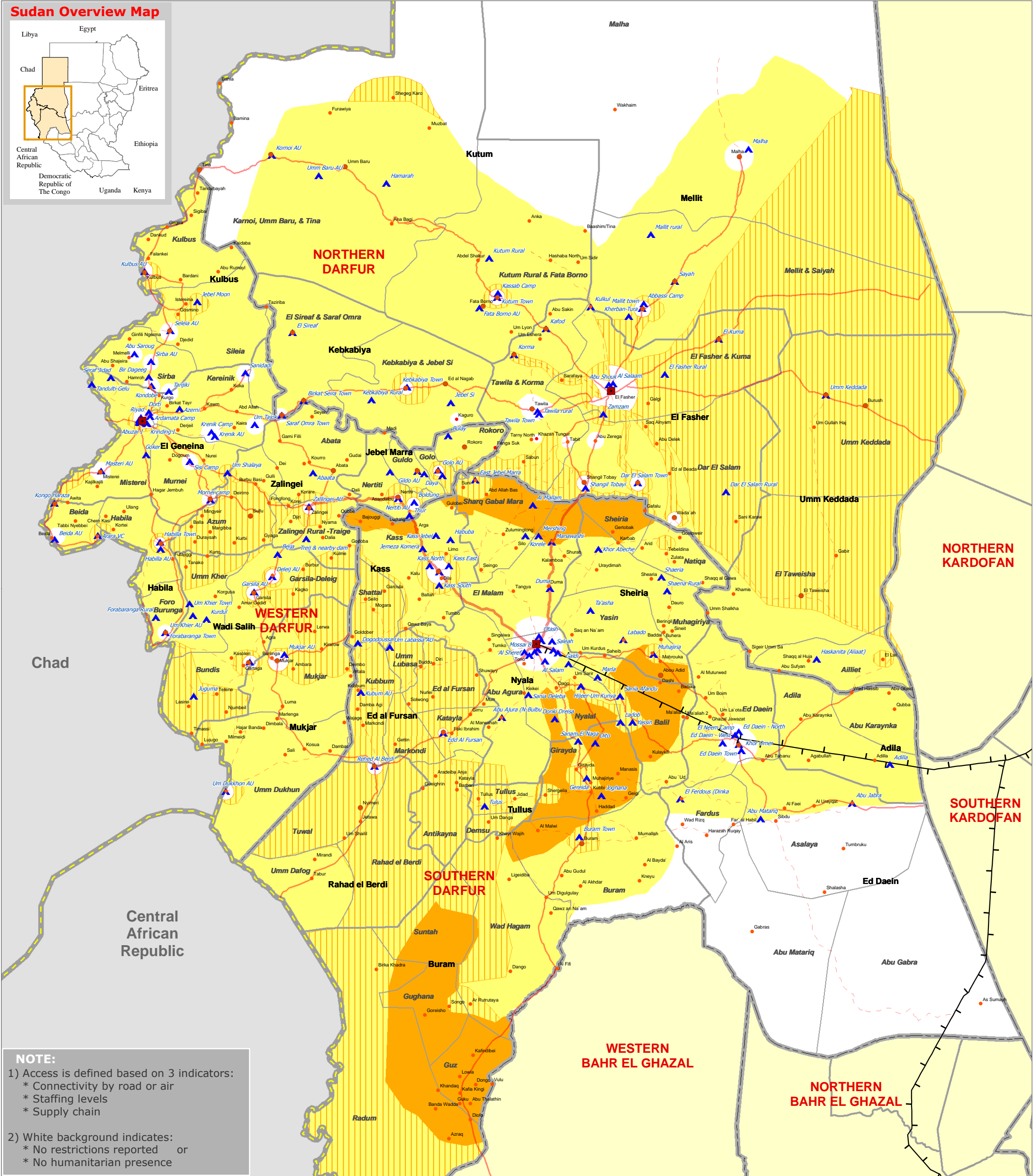
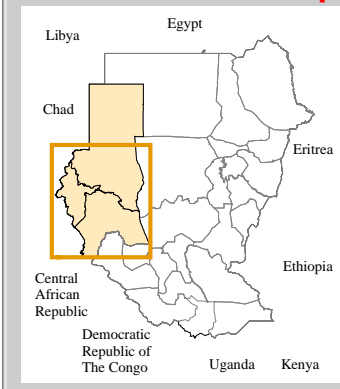


DARFUR, SUDAN

Humanitarian Access Overview Map

Areas Consistently Limited Access and No Access (From Apr 2008 to Feb 2009)

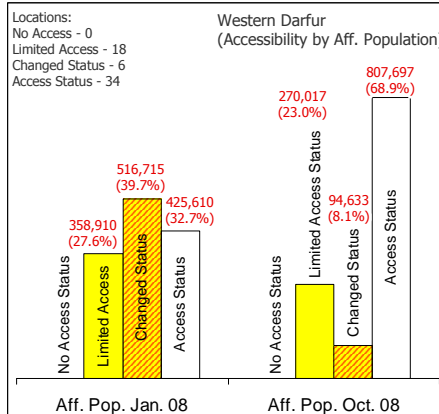
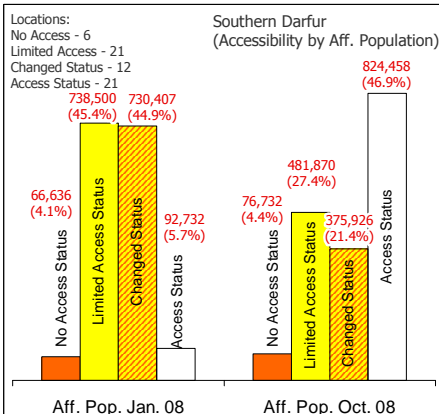
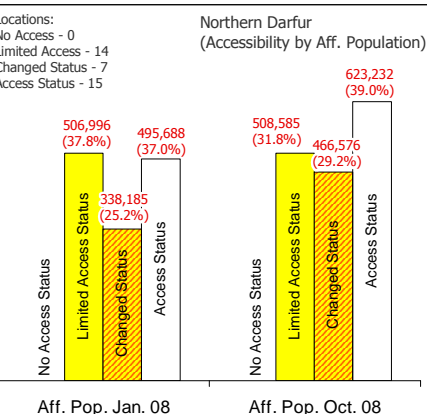
Sudan Overview Map



NOTE:

- Access is defined based on 3 indicators:
 - * Connectivity by road or air
 - * Staffing levels
 - * Supply chain
- White background indicates:
 - * No restrictions reported or
 - * No humanitarian presence

* Affected population figures and IDP Gathering locations used in this map are based on Humanitarian Needs Profile (HNP), Dated 1 Jan 2008 and 1 Oct 2008.



LEGEND

- International Boundaries
- State Boundaries
- Locality Boundaries
- Rural Council Boundaries
- Paved Road
- Primary Road
- Secondary Road
- Railways
- Area Consistently Not Accessible
- Area Consistently with Limited Access
- Area Consistently Changed Status
- Affected Population Locations

Data Sources: Political Boundaries - SIM; Roads - HIC & UNJLC; Railways - UNJLC; Settlements - HIC, OCHA, Field; IDP Camps - WFP, OCHA, HIC; Thematic - UNOCHA, IMU

This map is a work in progress. Please contact the IMU/UNOCHA as soon as possible with any corrections.

Approximate humanitarian access data based on discussions with humanitarian agencies operating in Darfur.

The boundaries and names shown do not imply official endorsement or acceptance by the United Nations

Projection - Geographic Datum - WGS 84

0 25 50 100 Kms

DRAFT