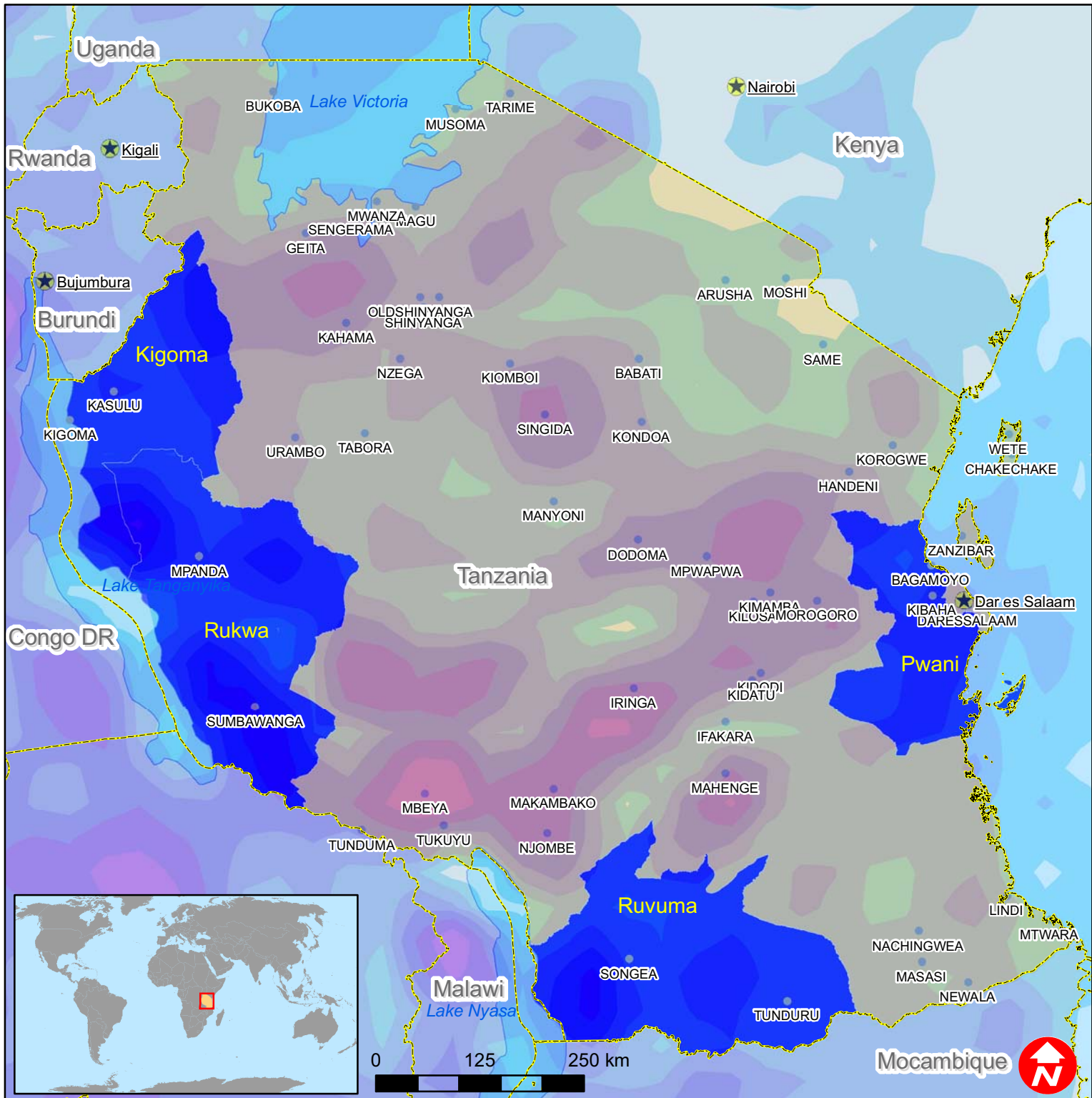




Tanzania: Floods



Forecasted rain's accumulation 20 to 27 January 2008 (in mm)

4 - 15	35 - 61	201 - 280
16 - 34	62 - 95	281 - 382
	96 - 140	383 - 567
	141 - 200	568 - 965

Areas have been receiving seasonal rains normal to above normal. Heavy downpours Assessment reports have indicated that a total of 1,117 families are in need of assistance in basic items to sustain their living.

Affected provinces